

P.O. Box 8  
Duchesne, UT 84021  
Phone 435 738-2453  
Fax 435 738-2620  
www.uintahmachine.com  
e-mail info@uintahmachine.com

---

---

## Uintah Machine Belly Dump Gravel Trailers

Uintah Machine manufactures low-profile belly dump gravel trailers with brakes and hydraulic or manual landing legs. The gates are operated hydraulically. Our standard trailer has an 8 cubic yard capacity. Air reservoirs and other hydraulic and pneumatic components are protected from falling objects and other blows. Each trailer is made with 1/2" x 4" x 12" tube frame for stiffness and strength. The trailers are built with 5th wheel hitches.

We take pride in our work. You can count on receiving the toughest, highest-quality, lowest-maintenance, gravel trailer around. Our customers have always been happy with our quality.

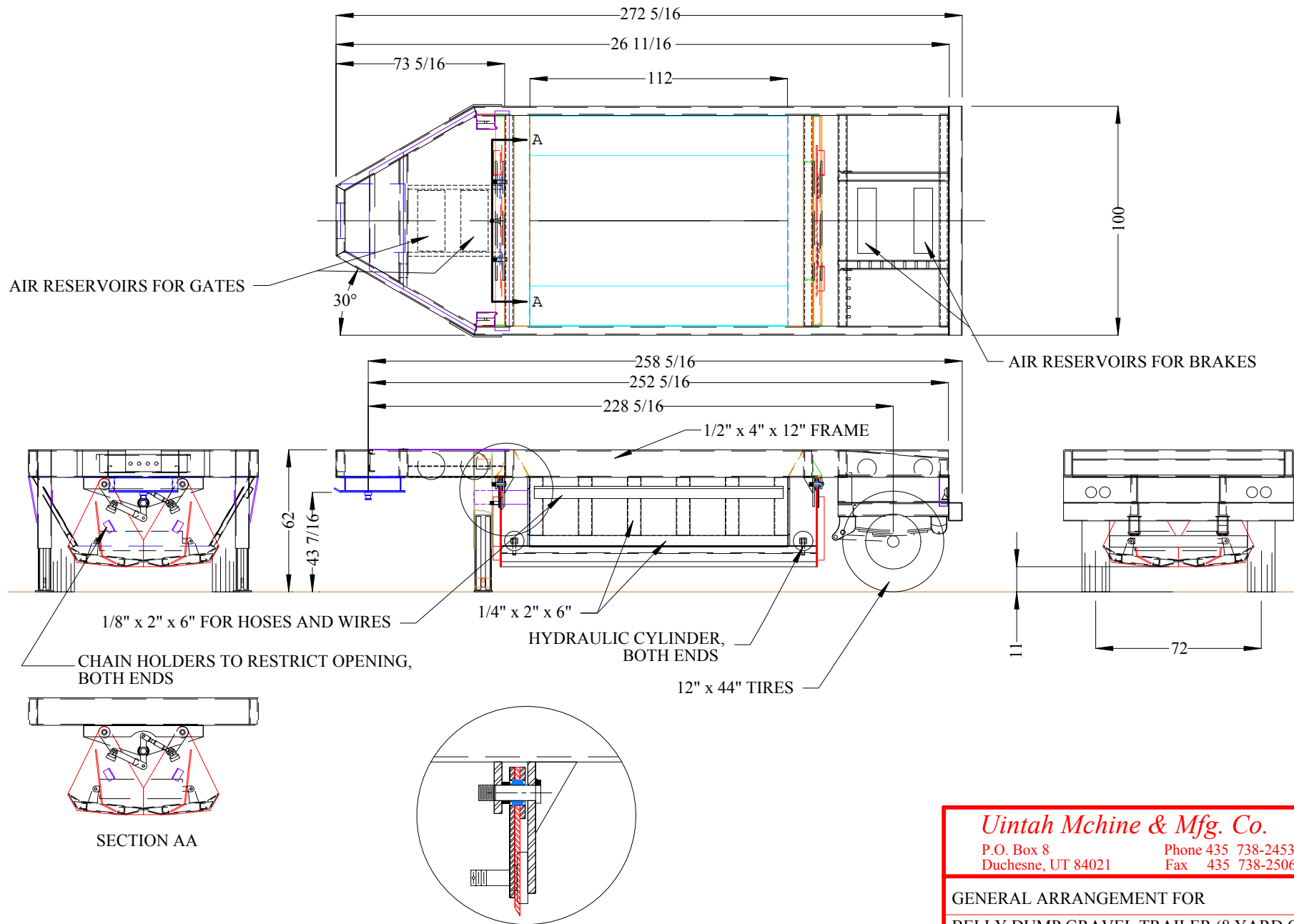
Uintah is happy to design and build a gravel trailer to meet your specific needs. Contact us for a free quotation.

Visit our Web site at [www.uintahmachine.com](http://www.uintahmachine.com) for more information about our mining equipment and services.

Click on blue links to view drawings and photos

8 yard belly dump gravel trailer with pneumatic  
brakes and hydraulic landing legs and gates . . . . . [20255-01  
PHOTO](#)

[CONTENTS](#)



BEG20250\20255DIR\20255-01.TCW

**Uintah Machine & Mfg. Co.**  
 P.O. Box 8 Phone 435 738-2453  
 Duchesne, UT 84021 Fax 435 738-2506

GENERAL ARRANGEMENT FOR  
**BELLY DUMP GRAVEL TRAILER (8 YARD CAP)**

DATE: 05/24/02 DRWN BY: Jake Hamilton SCALE: 1: 60

PATH, FILE NAME, OR DRAWING NUMBER: 20255-01.TCW



UNDERGROUND BELLY DUMP GRAVEL TRAILER.

[CONTENTS](#)  
[BELLY DUMP](#)