

P.O. Box 8
Duchesne, UT 84021
Phone 435 738-2453
Fax 435 738-2620
www.uintahmachine.com
e-mail info@uintahmachine.com

Uintah Machine 3-Axle Trailers

Uintah Machine designs and manufactures 3-axle trailers to haul very heavy loads such as head and tail gearboxes underground. Rated for up to 80,000 lb. and running on rubber tires instead of steel, these trailers fill an important niche in the underground mine industry.

The suspension on our 3-axle trailers equalizes the load among all 6 wheels while adjustable drag links keep the floating axles parallel with each other.

The model shown here has a drop-deck bed with manual landing legs. The Uintah preferred model has a 24" flat deck with bigger wheels and hydraulic landing legs. Accessories such as stakes and

winches can also be added.

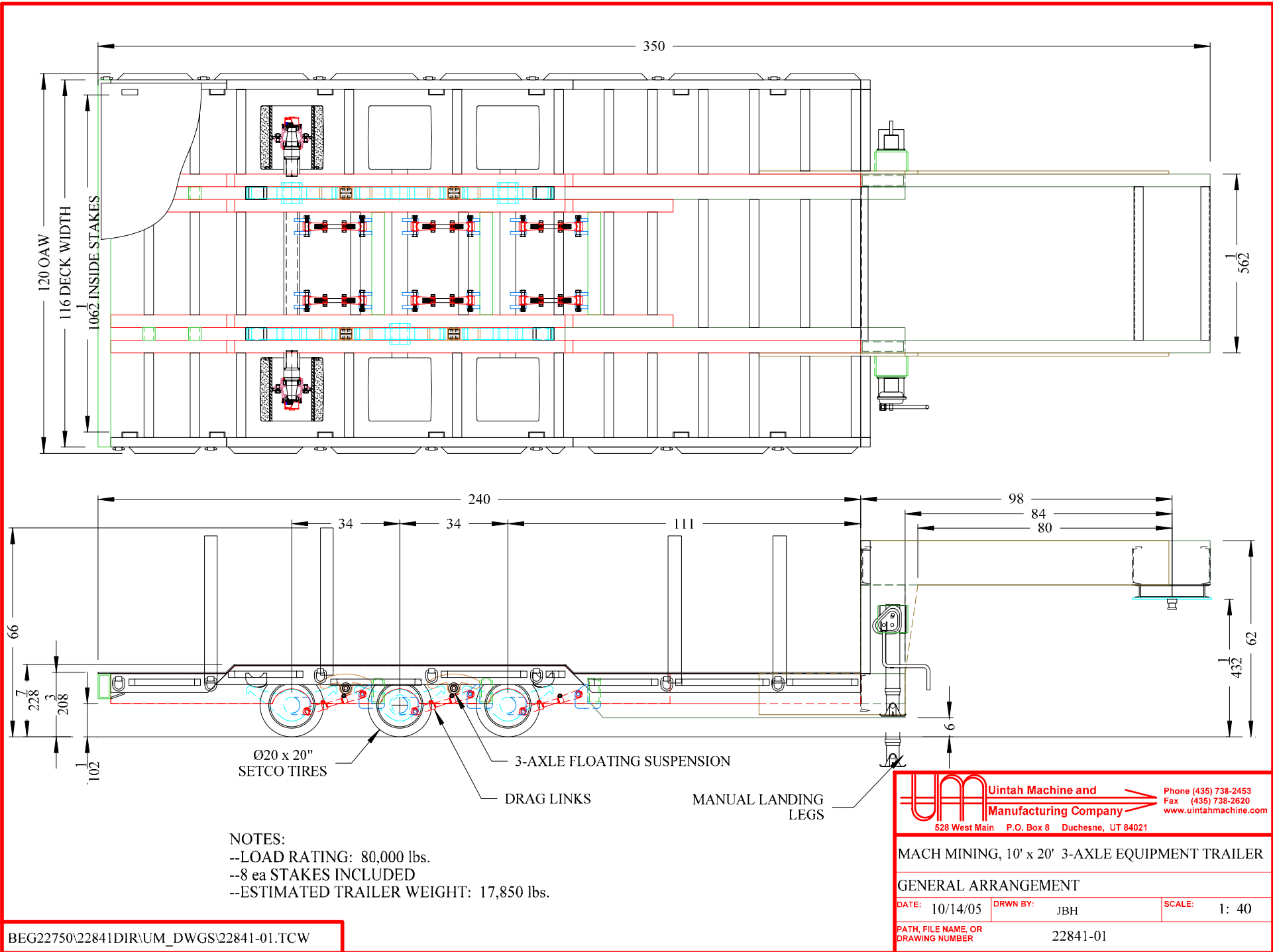
We take pride in our work. You can count on receiving the toughest, highest-quality, lowest-maintenance, 3-axle trailer around. Our customers have always been happy with our quality.

Uintah is happy to design and build a 3-axle trailer to meet your specific needs. Contact us for a free quotation.

Our expertise is not limited to trailers alone Visit our Web site at www.uintahmachine.com for more information about our mining equipment and services.

Click on blue links to view drawings and photos

3-AXLE DROP-DECK TRAILER. . . . . 22841-01
PHOTO 1
PHOTO 2



NOTES:  
 --LOAD RATING: 80,000 lbs.  
 --8 ea STAKES INCLUDED  
 --ESTIMATED TRAILER WEIGHT: 17,850 lbs.

BEG22750\22841DIR\UM\_DWGS\22841-01.TCW

**UM** Uintah Machine and Manufacturing Company  
 528 West Main P.O. Box 8 Duchesne, UT 84021  
 Phone (435) 738-2453  
 Fax (435) 738-2620  
 www.uintahmachine.com

MACH MINING, 10' x 20' 3-AXLE EQUIPMENT TRAILER

GENERAL ARRANGEMENT

DATE: 10/14/05 DRWN BY: JBH SCALE: 1: 40

PATH, FILE NAME, OR DRAWING NUMBER 22841-01

CONTENTS  
 3-AXLE



3-axle trailer. Manual landing legs are shown, but they may be replaced with hydraulic landing legs. Accessories such as stakes and winches are also available.

3-AXLE



Construction of 3-axle floating suspension. Rocker arms, axle arms, drag links, and axles are shown here.

3-AXLE